



*the World Famous*

**TRAKRITE**

**WHEEL ALIGNMENT RANGE**

**Trakrite Camber Gauge**

**Part No. 77066**

**Instructions**

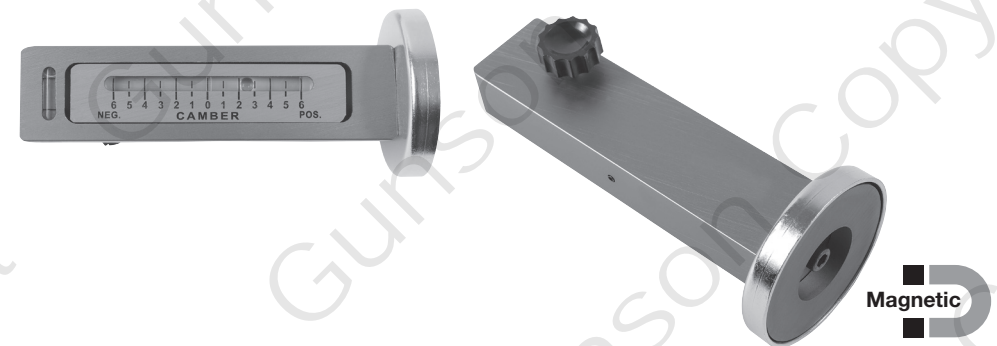


*Measures the camber and caster angle on the wheel hub or brake disc and allows adjustment to maintain correct wheel alignment and even tyre wear.*

## **Introduction:**

Magnetic gauge for checking camber and caster angles.

- Attaches to the hub or disc brake
- Accurate checking of castor and camber angle
- Graduated from -6 to +6 degrees
- Saves expensive repair and down time
- Allows the strut to be returned to original camber position or to check the amount of camber change before re-installing



## **Calibration:**

To ensure the magnetic gauge is calibrated correctly to read absolute level, use a spirit level to level the transverse bubble and clamp the gauge onto a known vertical service (metal is helpful).

Adjust the knob at the rear to centre the bubble on the Zero position.

N.B. Any adjustments made to camber or caster angle may affect the other so always re-check a final time.

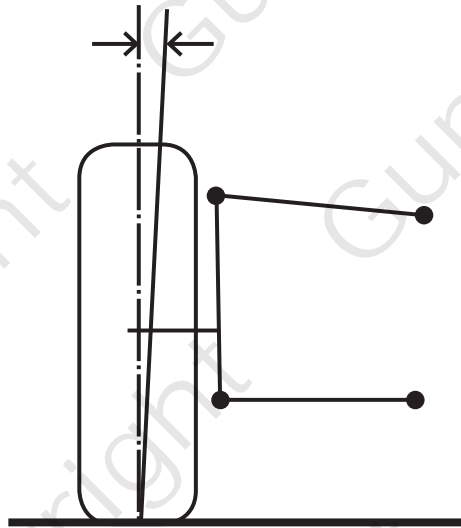
# Instructions for use:

## Camber Angle – Wheels on

For this check you will need to ensure the vehicle is parked on a flat surface, all of the tyres are inflated to the correct pressure, the rear wheels are made secure and wheel trims removed.

1. Use a straight bar vertical across the flats of the wheel making sure nothing impedes the flat surface (there may be enough flat surface to attach the gauge directly to the wheel).
2. Place the camber gauge in the centre of the bar and read the – Neg. or + Pos. angle.
3. Record this angle and repeat the procedure on the opposite wheel.

N.B. If the gauge indicates an unusually large angle, it may be necessary to check again with a full fuel tank and with a normal load.



## Camber Angle – Wheels Off

Using this method you must ensure that the car body is equal distance off of the ground and the wishbone is jacked up to replicate the running position.

Also make sure the wheels are facing directly ahead.

Using the horizontal level, connect the gauge to the brake discs and read the angle.

Repeat for the other hub.



Gunson Trakrite Camber Gauge 4

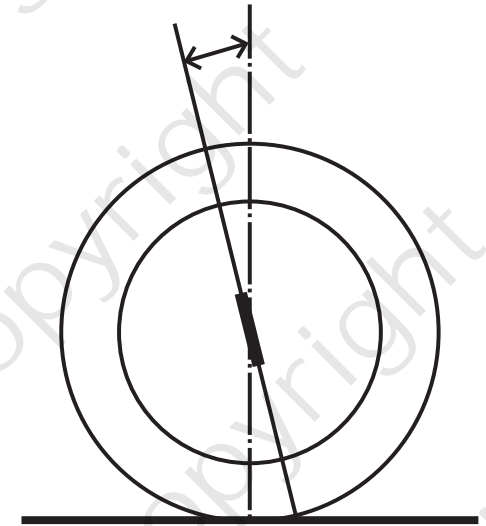
## Caster Angle

The caster angle is the angle between the vertical and the inclination of the King Pin when viewed from the side of the wheel.

To measure this angle the wheels must be on the vehicle. If a turntable is not available it may be useful to mark out the angles on the workshop floor.

Start with a straight line and mark 2 diagonal lines at 20° (40° total).

1. Turn the steering 20° to the right.
2. Set the measurement of the off-side wheel by attaching the gauge to a level surface, making sure the horizontal bubble is level, at 90° to the wheel spindle and adjust the bubble so that it is directly over the Zero mark.
3. Now turn the wheels 40° to the left (through the straight line if turntable is not available) and attach the gauge to the near side wheel as before.
4. The measurement reading is the caster angle. Negative caster is when the steering axis is inclined toward the front of the vehicle and positive caster is achieved when the steering axis is inclined toward the rear of the vehicle.



Gunson Trakrite Camber Gauge 5

## Also available in the Trakrite range:

### Gunson Trakrite Wheel Alignment Gauge (Part Number G4008)

The Trakrite wheel alignment gauge is the simplest, most accurate device for checking the alignment of the steered wheels of car and light commercials. It is a roller bearing platform over which one front wheel is slowly driven with the wheels in their straight ahead position.



### Gunson Trakrite Camber, Castor and King Pin Gauge (Part Number 77099)

Camber gauge with fixed graduation from +5 degrees to -5 degrees, castor gauge graduated from +11 degrees to -3 degrees and King Pin gauge from 0 to 14 degrees left to right.



### Gunson Trakrite Camber Bar (Part Number 77137)

Designed to allow the Gunson 77066 Trakrite Camber Gauge or the Gunson 77099 Trakrite Magnetic Camber Castor & King Pin Gauge, to be used with the wheels on the vehicle and the vehicle sitting on the ground.



## Also available from Gunson:

### Gunson Steering Turntables (Part Number 77100)

Competitively priced pair of turntables for checking the tracking on modern vehicles. Use in conjunction with Gunson 77099 Trakrite camber, castor and King Pin gauge.



Our products are designed to be used correctly and with care for the purpose for which they are intended. No liability is accepted by the Tool Connection for incorrect use of any of our products, and the Tool Connection cannot be held responsible for any damage to personnel, property or equipment when using the tools. Incorrect use will also invalidate the warranty.

If applicable, the applications database and any instructional information provided has been designed to offer general guidance for a particular tool's use and while all attention is given to the accuracy of the data no project should be attempted without referring first to the manufacturer's technical documentation (workshop or instruction manual) or the use of a recognised authority such as Autodata.

It is our policy to continually improve our products and thus we reserve the right to alter specifications and components without prior notice. It is the responsibility of the user to ensure the suitability of the tools and information prior to their use.



**Part No. 77066**  
**Instructions**



[www.gunson.co.uk](http://www.gunson.co.uk)

**Guarantee**



Distributed by The Tool Connection Ltd  
Kineton Road, Southern, Warwickshire CV47 0DR  
T +44 (0) 1926 815000 F +44 (0) 1926 815888  
info@toolconnection.co.uk [www.toolconnection.co.uk](http://www.toolconnection.co.uk)

If this product fails through faulty materials or workmanship, contact our service department direct on: **+44 (0) 1926 818186**. Normal wear and tear are excluded as are consumable items and abuse.